



DISRUPT

THE PREDICTION

OCTOBER 19 – 30, 2020

Create Meaningful Dashboards Related to SEL, Culture, and Climate

Jaime Harris and Kristin Rockwell

October 19, 2020

Table of Contents



**Understand
Definitions**



**Review Current
Significance**



**Learn How AD
Can Support**



Take Action

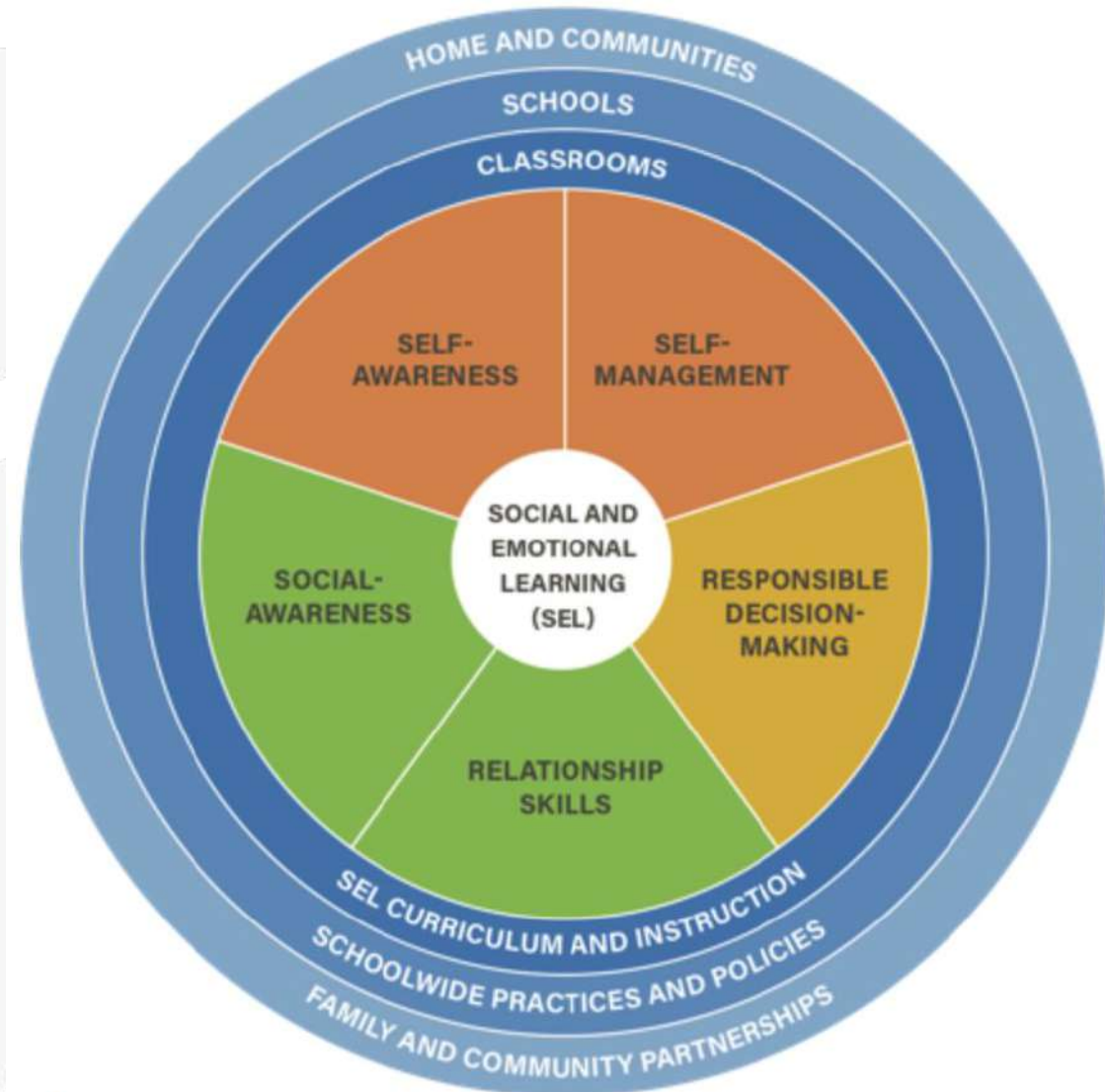


Defining SEL, Culture and Climate



What is Social-Emotional Learning (SEL)?

Social and emotional learning (SEL) is the process through which children and adults understand and manage emotions, set and achieve positive goals, feel and show empathy for others, establish and maintain positive relationships, and make responsible decisions.



SOURCE:
[CASEL \(2017\)](#).

What is Social-Emotional Behavior (SEB)?

SEB functioning is defined by:

1

The presence of positive social-emotional skills and skills that help students learn

Self-Awareness

Social Awareness

Self-Management

Relationship Skills

Responsible Decision-Making

Motivation

Academic Engagement

Study Skills



2

The absence of disruptive behaviors that prohibit learning and healthy relationships

Aggression

Noncompliance

Disruption

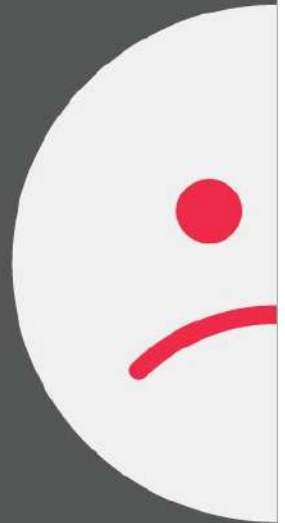
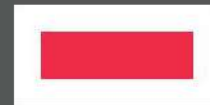
Property Destruction

Sadness

Semantic Problems

Worry/Fear

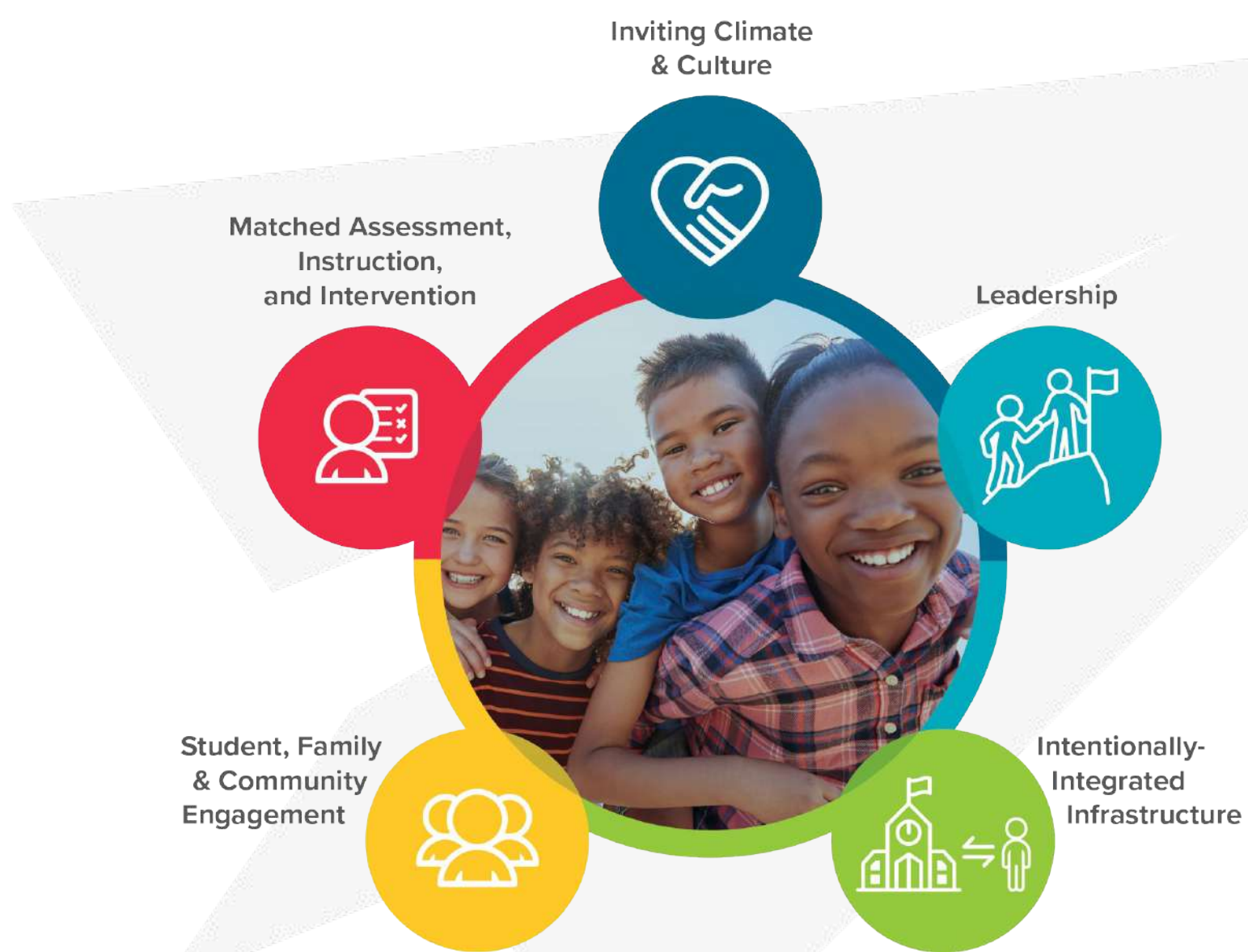
Withdrawal/Avoidance



SEL/SEB Can Also Be Defined Through School Climate and Culture



General MTSS Framework Components



What is School Climate?

- **School climate** refers to the physical, social and emotional environment, or “feel” of a school
- Result of many factors, but it can be summed up as:
 - how engaged students are by their teachers,
 - how welcomed they are by their peers
 - how invested their family is in helping them achieve their best
- ESSA (2015) requires an indicate of “school quality and student success” in statewide accountability systems
 - May include: student engagement, student attendance, educator engagement, school climate and safety, other factors intimately related to academic well-being and success)

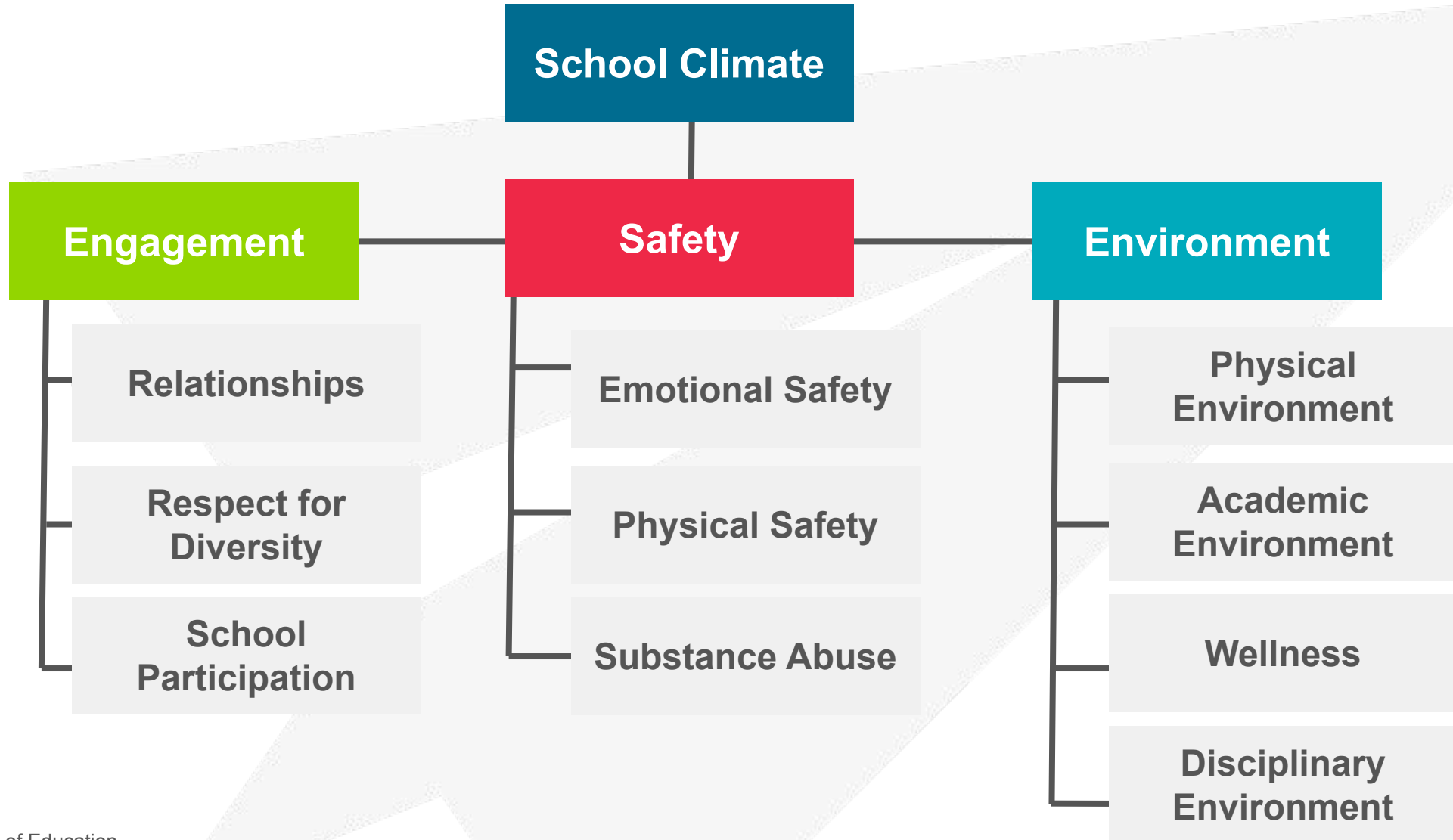


What is School Culture?

- **School culture** typically refers to the long-term physical and social environment, as well as the values or beliefs of the school shared across individuals and time (National School Climate Center, FAQ's About School Climate, n.d.).
- **Climate** is the 'attitude or mood' of the school and the **culture** as the 'personality or values' of the school. Climate is perception-based, while culture is grounded in shared values and beliefs (Gruenert, 2008).



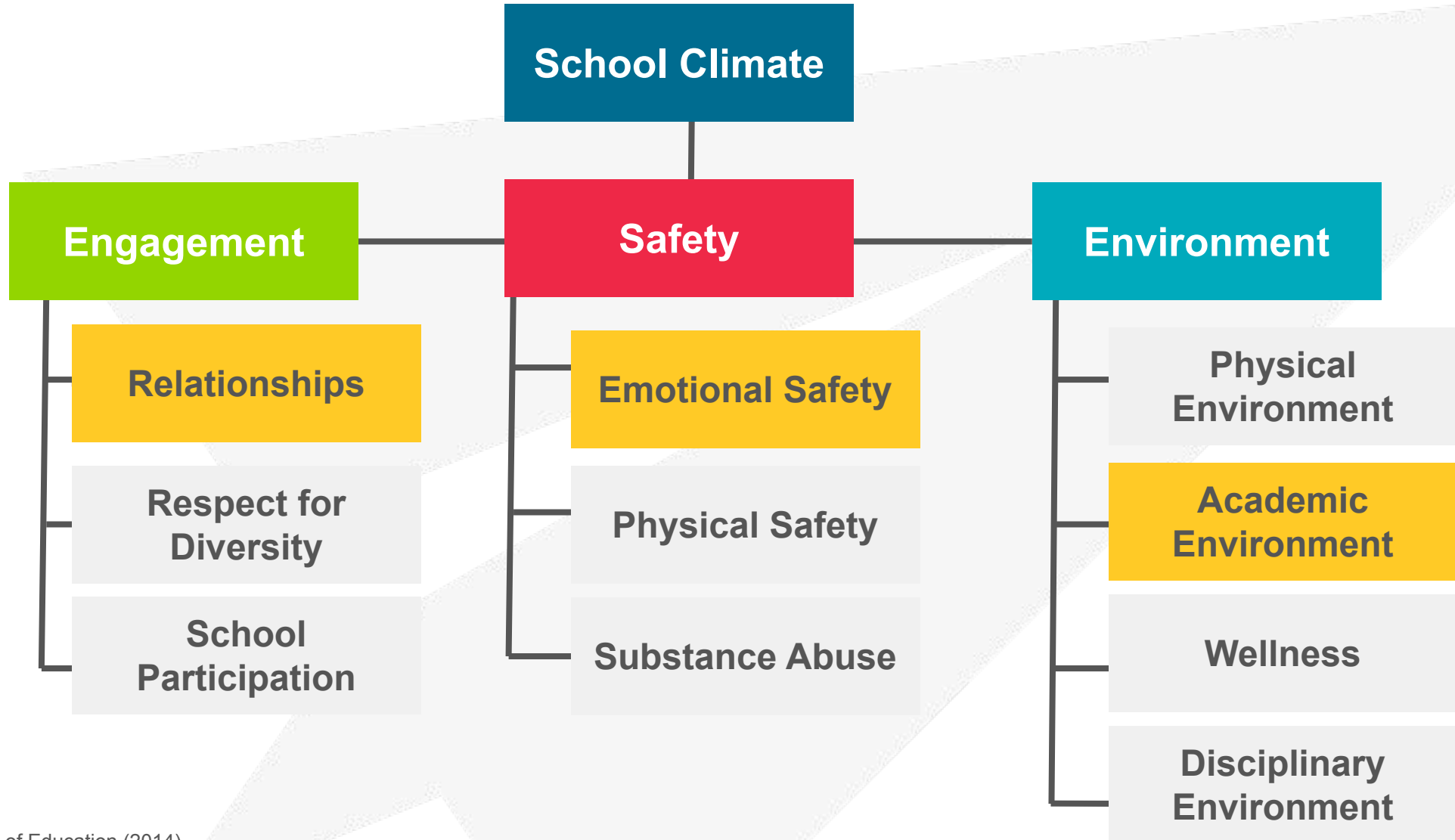
Components of School Climate



SOURCE:
U.S. Department of Education



Why is School Climate Important Today?



SOURCE:
U.S. Department of Education (2014).



**When we unpack school climate, we find
key social-emotional and wellness elements**



Many of those elements are
currently at risk



We must focus on those at-risk school climate elements to help students succeed this year, no matter where learning takes place

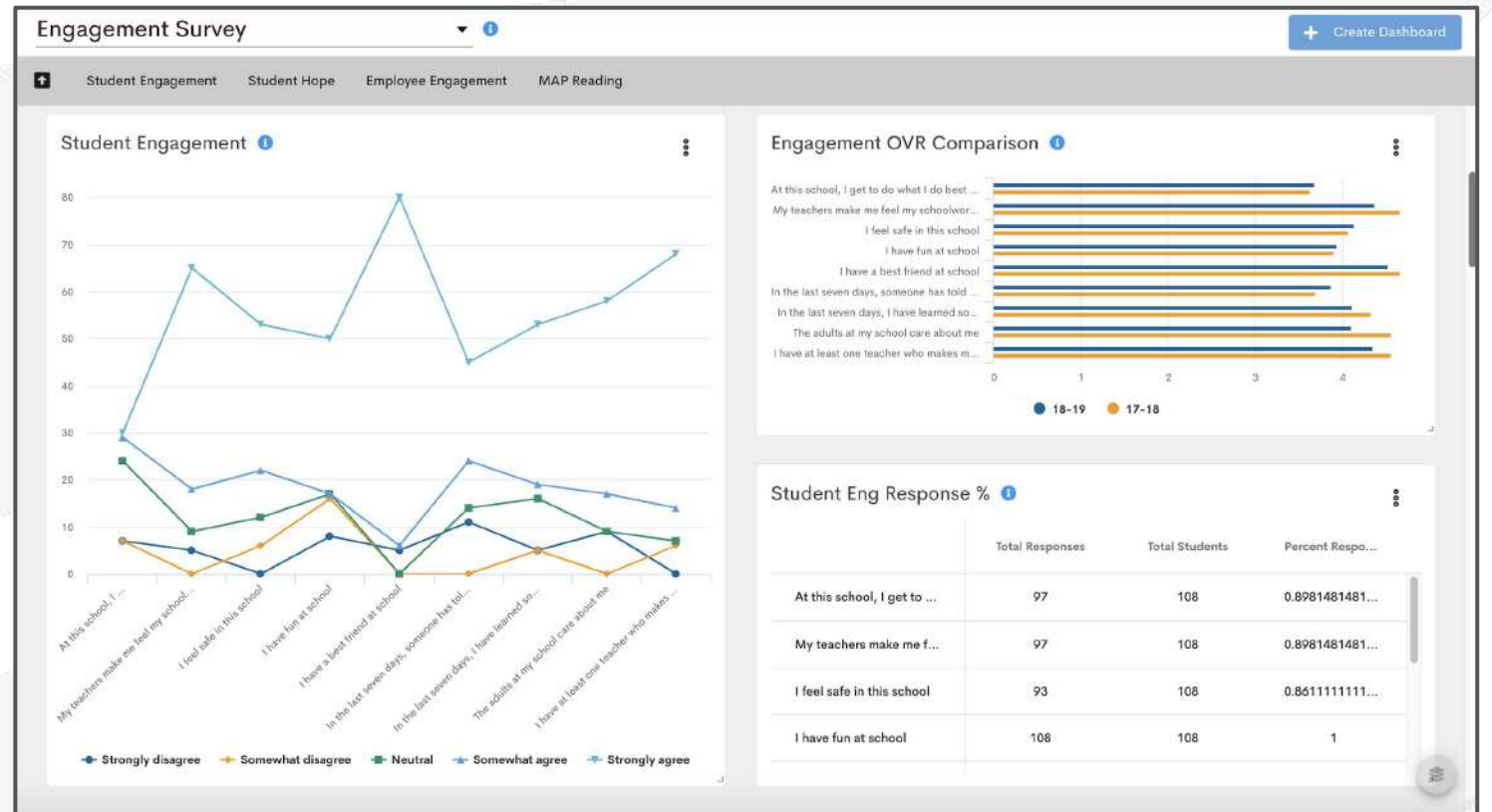


Use Achievement Dashboard



How Can Achievement Dashboard Help?

- Create dashboards with a **specific focus**
- Utilize **Google Sheet visualizations** to display survey data
- Create an **action plan**



Data to Consider for a SEL Dashboard

- Consider data that **already exists** in Achievement Dashboard
 - Academic data
 - Meal Status
- Consider entering **new data**
 - Health office visits
 - Counselor visits
 - Observations
- Gather survey data
 - Students
 - Families
 - Staff members



Data to Consider for a Climate Dashboard

- Survey data
 - Include Demographic factors
 - Gender
 - Ethnicity
 - Social and economic factors
 - Disability codes
 - Include perceptions
- Academic data
- Attendance data
- A range of group-specific and individual considerations must be considered to create a school climate that is responsive to the needs of all students



Make It Meaningful

- Data Displayed on the Dashboard
 - Ensure the data on the dashboard is meaningful to the audience
- Additional Considerations for the Dashboard
 - Use meaningful section headers
 - Organize the visualizations in a manner that makes sense
 - Enlarge more powerful visualizations



Take Action



Take Action

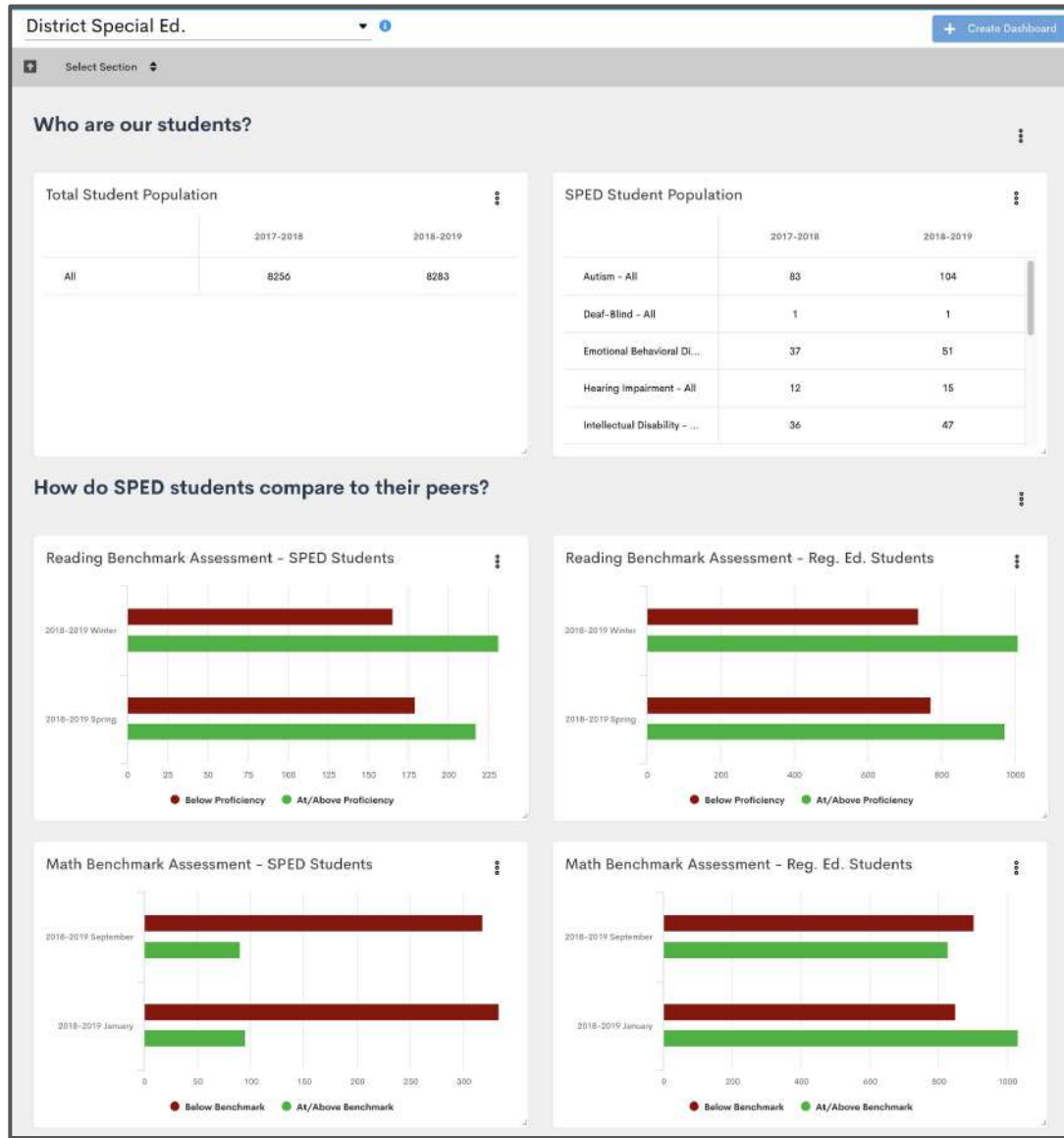
- Take baby steps!
 - Share the dashboard
 - Schedule shared times to discuss the data
 - Welcome a variety of voices
- Create an action plan



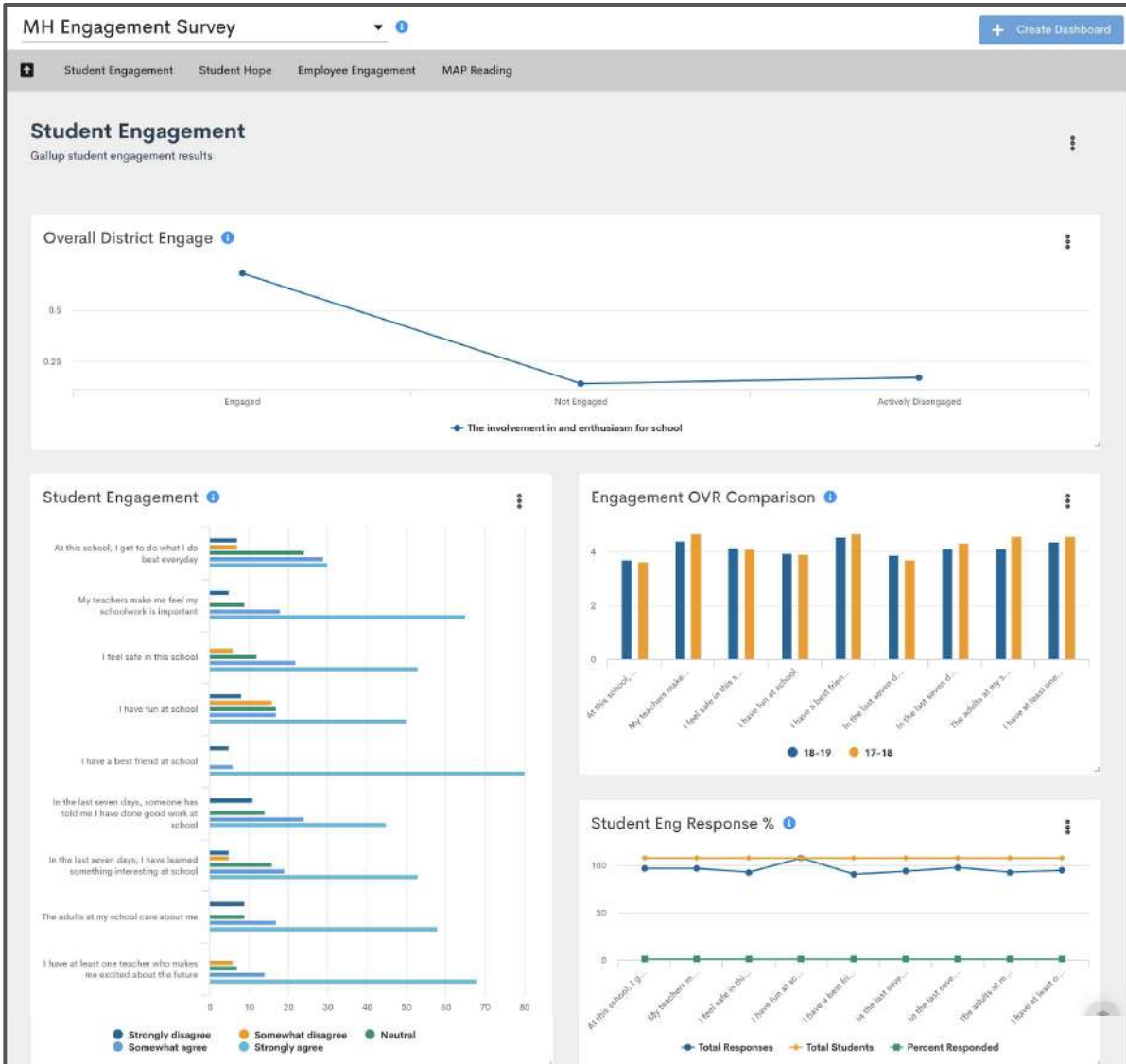
Dashboard Examples



Example Dashboard 1

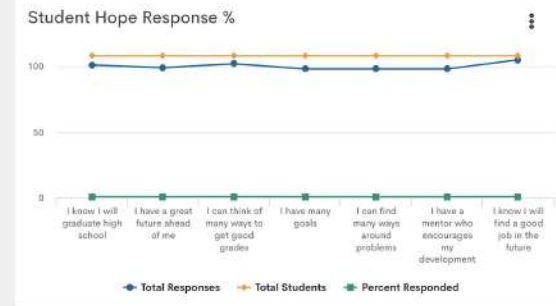
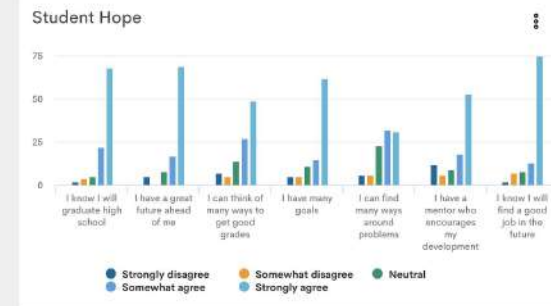
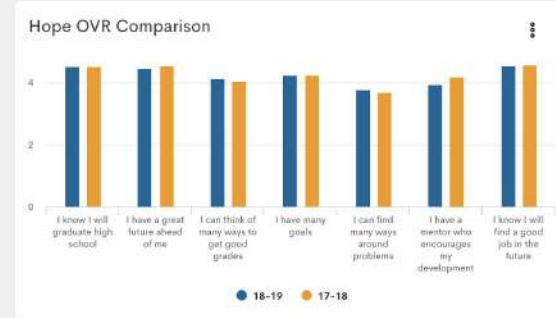
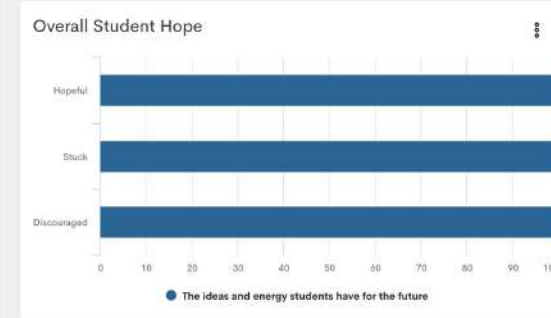


Example Dashboard 2



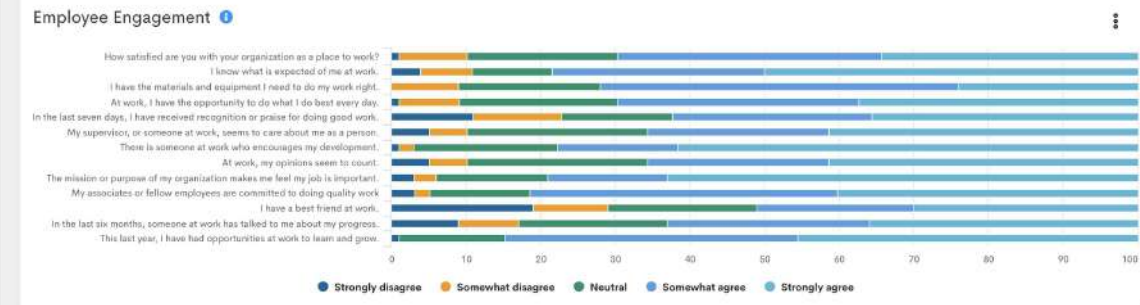
Student Hope

Gallup student engagement results



Employee Engagement

By the end of the 2018-19 school year: • If score of 4.0 or higher, will maintain or increase the current score as measured by the annual School Perceptions survey. • If less than 4.0, will increase by the score by 0.2 or higher



DISRUPT

THE PREDICTION

Thank you for attending!

Want to learn more?

Reach out to us at: illuminateed.com/disrupt

