



THE ILLUMINATOR

Your biweekly newsletter for all things Illuminate @ Aspire!



Volume 1 Issue 2
September 2015

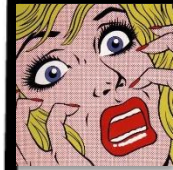
FUTURE ILLUMINATE EXPERTS' TIP OF THE WEEK:

"[Hybrid Assessment](#)" - A brand-new Illuminate innovation for Manual Setup assessments! [Begin the same way](#), then... Add your materials (PDFs, Docs, PPTs) to Manual Setup assessments, and students will see a split-screen quiz with your doc on the left & blank multiple choice items on right! Repurpose existing tests & build online skills in 4 easy steps!



- Step 1 → Add materials (Setup → Materials + "upload")
- Step 2 → Drag desired doc from your computer + "attach"
- Step 3 → Go to Administration tab → Online Testing
And click "+ add roster" in the top corner
- Step 4 → Show Online Administration Settings → "inline booklet" dropdown to choose your uploaded doc.

"MY STUDENTS CAN SEE MY PERSONAL ASSESSMENT DOCS ON THEIR SCREEN? MIND = BLOWN."



"BUT WHO WILL HELP ME!?"

- * [Illuminate Help Resources Page](#) (MyAspire)
- * View the [Illuminate FAQ doc](#) (Illuminate's help page)
- * help-dna.illuminateED.com (Illuminate's help page)
- * Call Illuminate: (949) 242-0343
- * Will Georges is your guy at Aspire!
will.georges@aspirepublicschools.org

"YOU REALLY DO CARE ABOUT ME..."

Sharing is caring...

Share the love with your team by [sharing your assessments](#) with your entire region, school site, grade level, or that one special person!

In your assessment, go to **Setup tab** → **Share**. Then choose the levels/people you want to share, & if you want them to: view/download, administer, and/or edit. Finally, click "share," and you're done!



EASILY CREATE GENED + SPED!

After you've published building your Itembank assessments into Illuminate, "[Duplicate Itembank Assessment](#)" (in "Advanced Tab" of the assessment, and choose "Not Published" form) in order to return to Itembank and make revisions to the items & passages on the "Review" + "Add Items" tabs. This feature is perfect for creating SpEd versions of assessments with appropriate:


- * Amount of questions
- * Question types
- * DOK levels
- * Passage types & Lexile levels

"DUPLICATE MY ASSESSMENTS...!?! ...NOW IF ONLY I COULD JUST DUPLICATE MYSELF..."

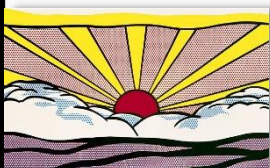


INNOVATION OF THE WEEK: Use the "My Favorites" icon to easily access assessments & reports from your Dashboard widget.

"...BUT THEY'RE ALL MY FAVORITES!"

To make an assessment or report your favorite, once you've clicked on the title of the report/assessment, click on the medallion/star in the upper right hand corner. 

Then, it will automatically be added to your "Favorites" widget back on your Dashboard!



...it helps me analyze data more quickly, and it creates a classroom culture of vulnerability and trust by giving my students opportunities to celebrate each other's successes!"

"I LOVE ILLUMINATE ALREADY BECAUSE..."

AMANDA YOSHIDA
(ILLUMINATE AFICIONADO
GRADE 4 / 5 APEX)





AMANDA YOSHIDA
4TH / 5TH GRADE
ASPIRE APEX ACADEMY

Spotlight On...

**Highlighting Illuminate Best Practices
 From Across the Aspire Network**

How have you used Illuminate in your classroom so far?

We use Illuminate for my weekly math and reading quizzes based on the standards we taught each week. We also use it for our **content unit pre-assessments**, as well as the MBSA our **monthly fact fluency assessments** for math, and the **student survey**. I've used all 3 types of assessments: **online, paper/pencil, and on-the-fly**.

The data that you get (once you learn how to read it) gives you **so much valuable data** - grading all the data by hand is time consuming! I used the "donut wheel" and the Student Responses report to **create small groups**.

How have your students reacted to using Illuminate?

My students really like Illuminate! They especially like **scanning the results** of the On-the-fly weekly quizzes. They are really good at **celebrating one another**, no matter how well they perform. Since the scores are projected up front, they've been trained to celebrate. This helps build our class culture.

They really like the variety of the 3 different forms of assessments on Illuminate. Since we mix it up, **our kids aren't getting burned out** - they don't realize that they're having so many assessments.

How is Illuminate helping your scholars?

For online assessments, some of the technical skills are proving challenging, like scrolling up & down on the passage of the left side of the page, but keeping the questions on the right side of the page still. **This skill is so helpful for the SBAC**, and this weekly practice with online assessments **helps with practical skills** like scrolling and navigating questions, as well as typing skills.

The more they **practice spelling and capitalization** on their constructed response questions (since I make a big deal about it), the more they improve!

How has your team been adopting Illuminate?

With my team, I've learned **the more we practice, the better we are!** Since it's the very beginning of the year, they've followed my guinea pig lead! They give the math and reading weekly quizzes that I created, and some teachers have started to create their own assessments!

It's going to take practice...**giving teachers the opportunity to create their own quizzes** will help everyone learn!

How do you think you'll use Illuminate in the future?

I'd like to focus on are learning how to **analyze the data, to save more time**. I've started to look at some of the reports in the "Where Do I Start for Teachers" screen, but I know there's much more!

Eventually, I'd like to use **laminated bubble sheets for quick, immediate checks for understanding** with the On-the-Fly assessment. Even with just one exit question, that could be really effective for quick formative checks.

Also, I'd like to use Illuminate for cross-content purposes. For example, creating similar performance tasks and writing snapshots will tie to Aspire-wide assessments.

How has the Illuminate help/support been for you?

Fantastic! [Danny Shapiro] answers my questions really fast, and I appreciate it so much. [He is] easily accessible; [he] shoots me an email back immediately. The support is wonderful! **I don't know if everyone knows how accessible Will Georges and Danny and everyone at Home Office have been for my Illuminate support.**

I haven't used the MyAspire help resources page yet, but I'll definitely check it out!