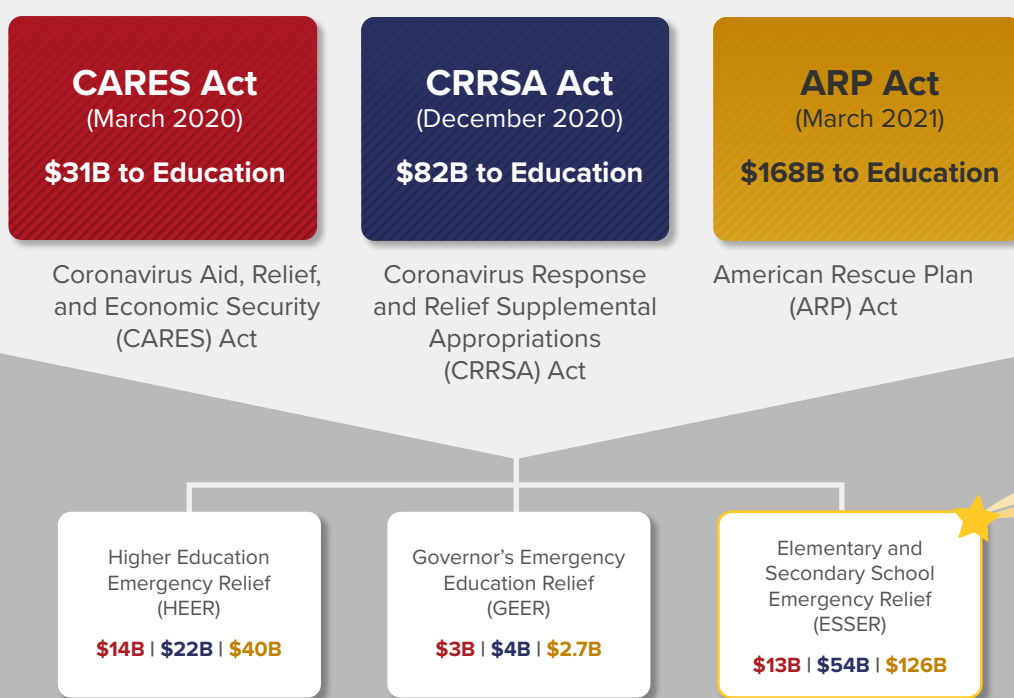


Understanding COVID Stimulus Funds

What K-12 district leaders need to know about the CARES, CRRSA, and ARP Acts

WHAT FUNDS ARE AVAILABLE? HOW ARE THEY DISTRIBUTED?



As of March 2021, there have been three federal stimulus packages supporting education.

For K-12 education, the **largest and most flexible fund** is the **Elementary and Secondary School Emergency Relief (ESSER) Fund**.

These funds are distributed according to the established Title 1 funding formula.

HOW CAN THE FUNDS BE USED?

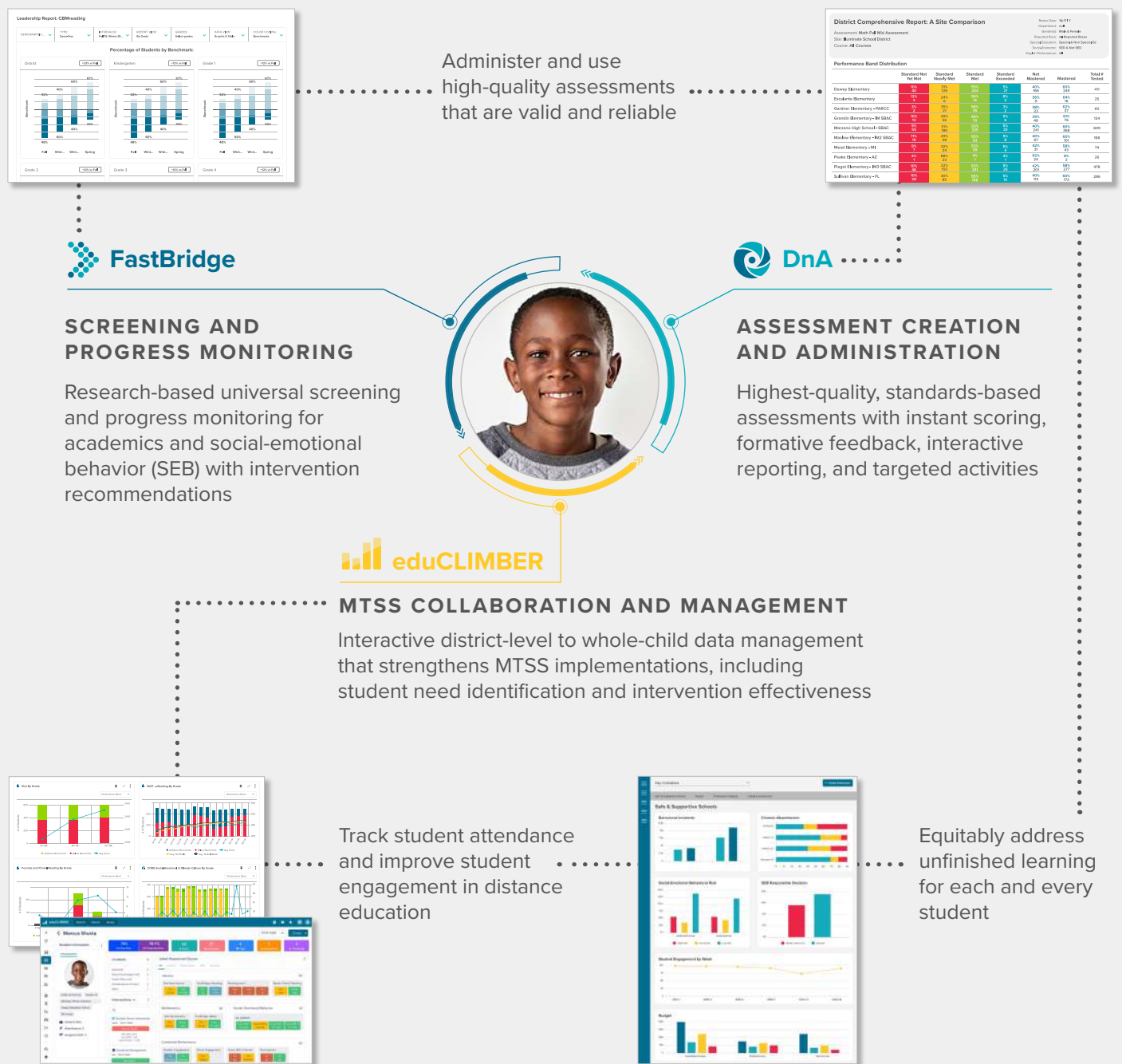
Once distributed, districts can only use these funds for allowable purposes. Importantly, the legislation emphasizes prioritizing **student growth**. Qualified uses include:

“Any activity authorized by the ESEA of 1965, IDEA, AEFLC, Perkins, and McKinney-Vento”

All Illuminate Education products and services are qualified ESSER purchases that equip educators to equitably and effectively accelerate growth for each and every student.



HOW STIMULUS PRIORITIES ALIGN WITH THE ILLUMINATE SOLUTION



WHY CHOOSE ILLUMINATE?

1 There are significant reporting requirements for districts to confirm appropriate use of ESSER funds, and choosing Illuminate makes that justification easy. Illuminate's tools align with ESEA's provisions, as shown below, and are therefore qualified purchases.

		DnA + Content	FastBridge	eduCLIMBER	Services
Title I	Providing high-quality education for low-income students	X	X	X	X
Title II, A	Improving teacher and principal quality			X	X
Title III	Supplementing English language instruction	X	X	X	X
Title IV, A	Delivering well-rounded education; Safe and Supportive Schools		X	X	X

2 Our comprehensive assessment tools equip your team to accelerate learning for each and every student. Combine standards-based assessments with universal screening and progress monitoring for math, reading, and social-emotional behavior (SEB) to deeply understand learning, identify students who are at risk, monitor growth, and take the right next step for each learner. To learn more, [read the whitepaper](#).

3 Connect the whole child data picture to built-in MTSS management and collaboration tools. Track growth at the district, school, and individual student levels and monitor whole child needs from a single platform. Built-in collaborative problem solving and intervention tracking tools enable systems-level improvements and efficiencies.

4 See the big picture in order to track progress towards district-wide goals. Monitor trends in growth and drive decisions around resource allocation, Tier 1 intensifications, and equitable practices. Report progress to parents, the board, and the community.